



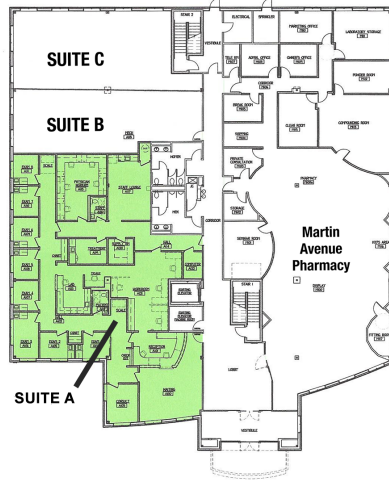
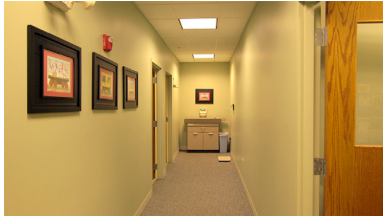
**First floor medical professional suites in Naperville,
Now available at competitive rates.**



SPRINGBROOK MEDICAL BUILDING



First floor medical professional suites in southern Naperville

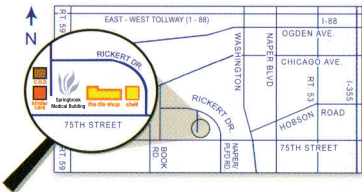


- Available at Competitive Rates
- Customized from 1,298 - 7,309 sq. ft.
- Suite A is 4,436 Rentable Sq. Ft.
- Suite A is built out with waiting room, office area, employee area and patient exam rooms.
- Suites B (1,298 Sq. Ft.) and C (1,575 Sq. Ft.) are unfinished, with build out options and incentives available. Suites A, B and C can be combined.
- Available January 1st, 2016



SPRINGBROOK MEDICAL BUILDING

For more information, visit www.springbrookmedical.com



Broker: James K Dunn Suburban Real Estate Services, Inc.
4300 Commerce Court, Suite 315 | Lisle, IL
Direct: 630-487-2119 | Cell: 630-204-6549
jdunn@suburbanrealestate.com

Springbrook Medical Building: 1247 Rickert Drive • Naperville, IL 60540
Located just WEST of the 75th Street and Rickert Drive intersection

75th Street Properties
1247 Rickert Drive
Naperville, IL 60540

PRSRT STD
U.S. POSTAGE

PAID
CAROL STREAM, IL
PERMIT NO.191