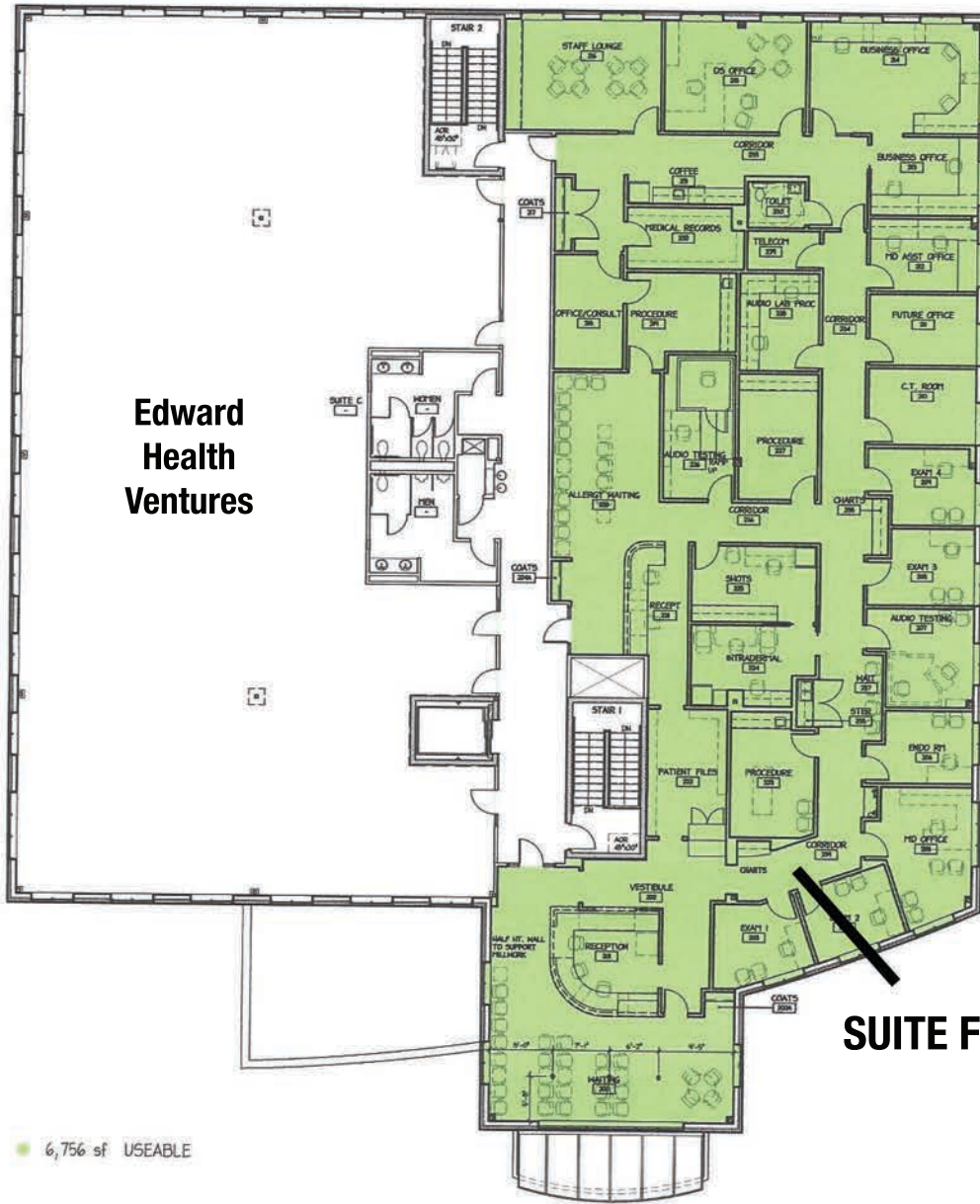


**Edward
Health
Ventures**



SUITE F

6,756 sf USEABLE

RENTABLE AREA CALCULATIONS: FLOOR

Floor R/U Ratio = Floor Rentable / Floor Useable
 $13,833 / 12,653 = 1.093$

Basic Rentable Area = Useable x Floor R/U Ratio
 $6,756 \times 1.093 = 7,386$ sf

RENTABLE AREA CALCULATIONS: BUILDING

Building R/U Ratio = Building Rentable / Building Useable
 $28,249 / 26,487 = 1.052$

Rentable Area = Useable x Floor R/U Ratio
 $7,386 \times 1.052 = 7,772$ sf

SECOND FLOOR PLAN
NO SCALE